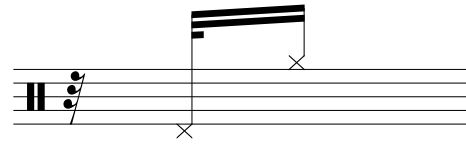


# Sly Hat Lessons

## 32nd Note Grooves #2



Closing on the Down Beats

Six rows of musical notation, each containing four measures of a 32nd note groove. Each measure starts with a quarter note followed by a 32nd note. The notation is repeated across six rows, with the final measure of each row ending with a double bar line. The grooves are designed to close on the down beats.

Want to learn more? Get the book *The Sly Hat* on Amazon to learn more Fills and Grooves!